

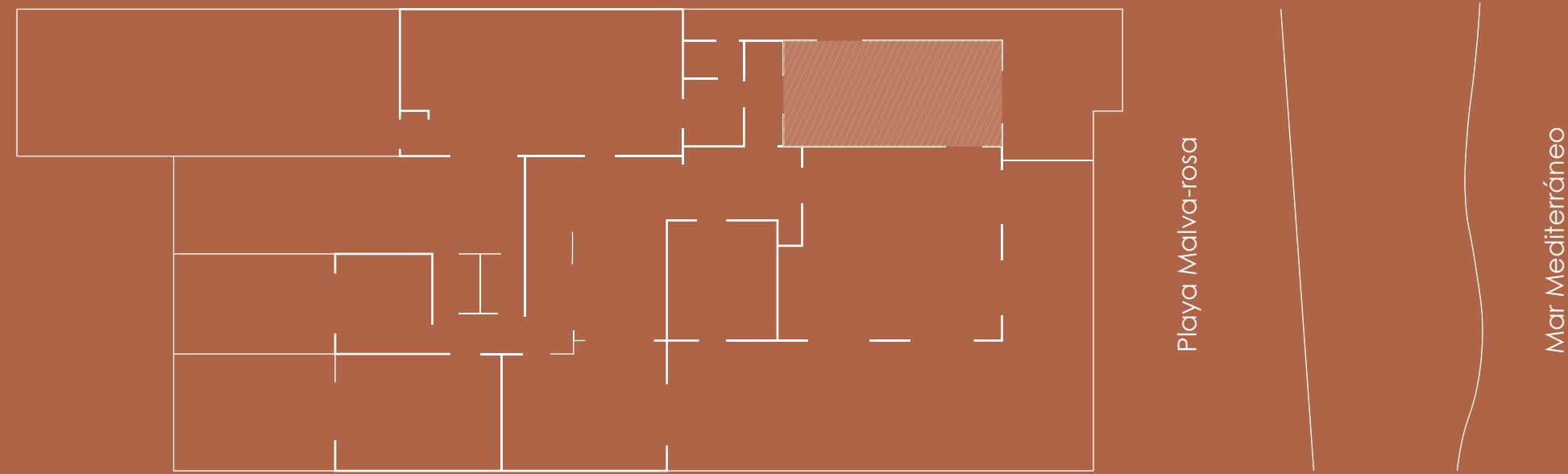
# Private rooms

restaurant  
casa carmela | 1❁❁ ANYS

In addition to the large main living room and the covered and air-conditioned interior patio, Casa Carmela has 6 private rooms the upper floor with their corresponding terraces for exclusive use.

Three of them are oriented to the sea and the other three to the city.

With their names we have tried to evoke our origin and the generations of the family that preceded us.

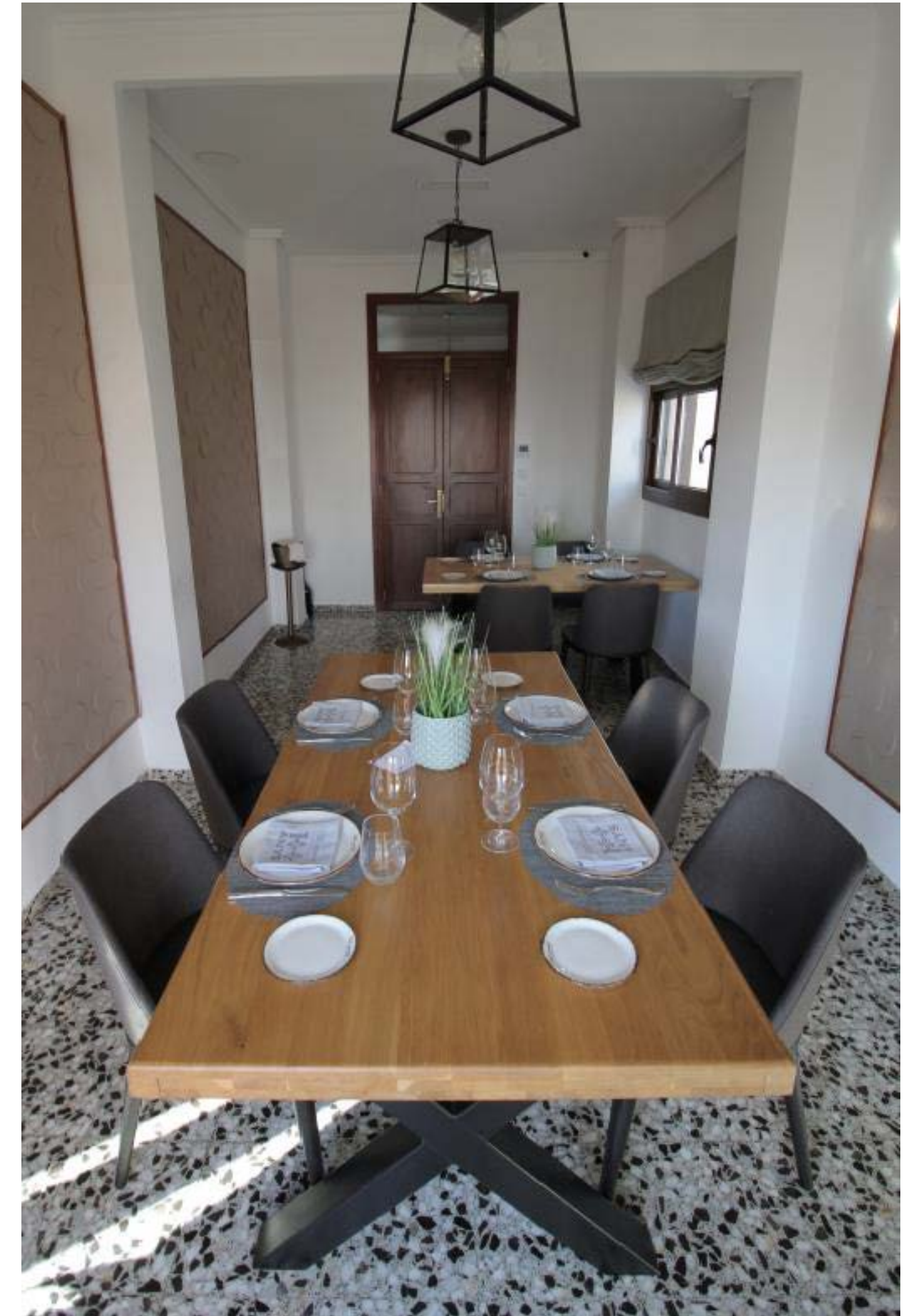


# Los bisabuelos

(mín. 12 – máx. 18)

Facing the sea, it has a minimum capacity of 12 people and a maximum of 18. The exclusivity of the room (and the terrace) until closing is 150 euros.

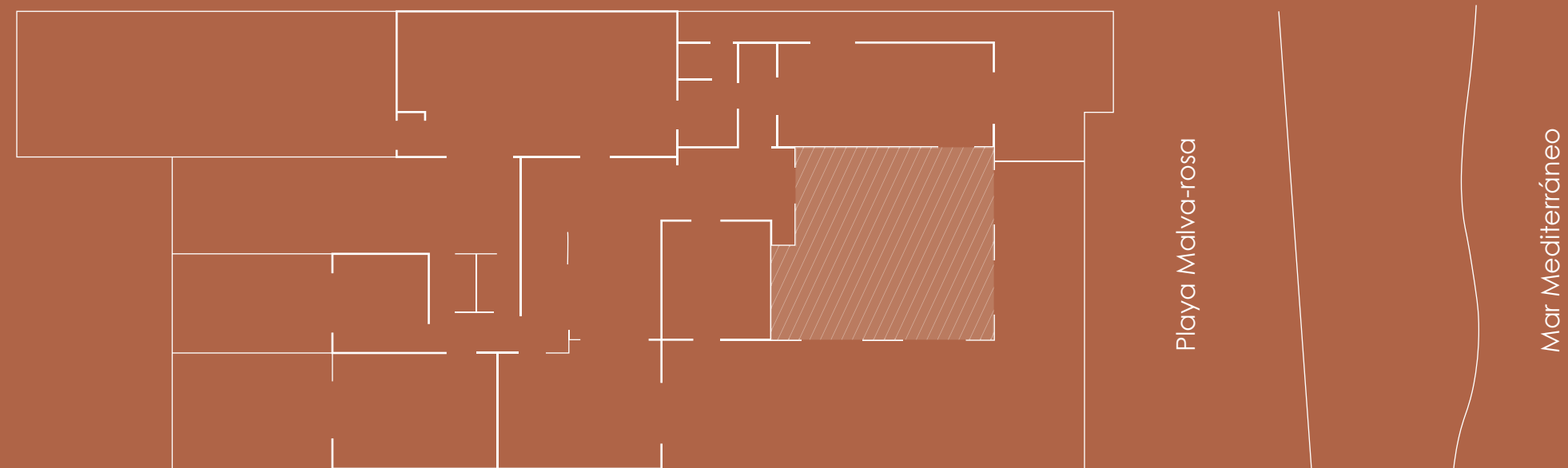
The great-grandparents (los bisabuelos), Carmela and José, were the founders of Casa Carmela.





Terraza 'Los bisabuelos'





# El tío Toni

(mín. 24 – máx. 30)

Facing the sea, it has a minimum capacity of 24 people and a maximum of 30. The exclusivity of the room (and the terrace) until closing is 300 euros.

Antonio Belenguer, the grandfather, was known by this nickname in the orchard, something very traditional in these lands that of giving nicknames.

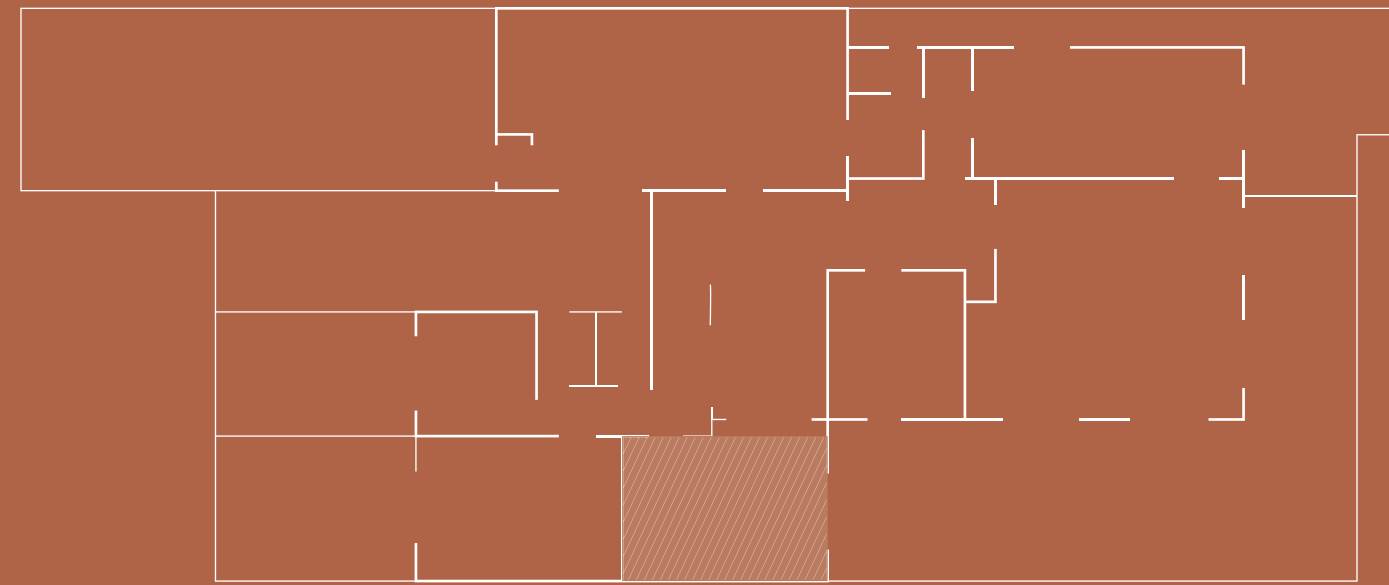




Terraza 'El tio Toni'







Playa Malva-rosa

Mar Mediterráneo

# La mar

(mín.8–máx.10)

Oriented to the sea, it has a minimum capacity of 8 people and a maximum of 10. The exclusivity of the room (and the terrace) until closing is 150 euros.

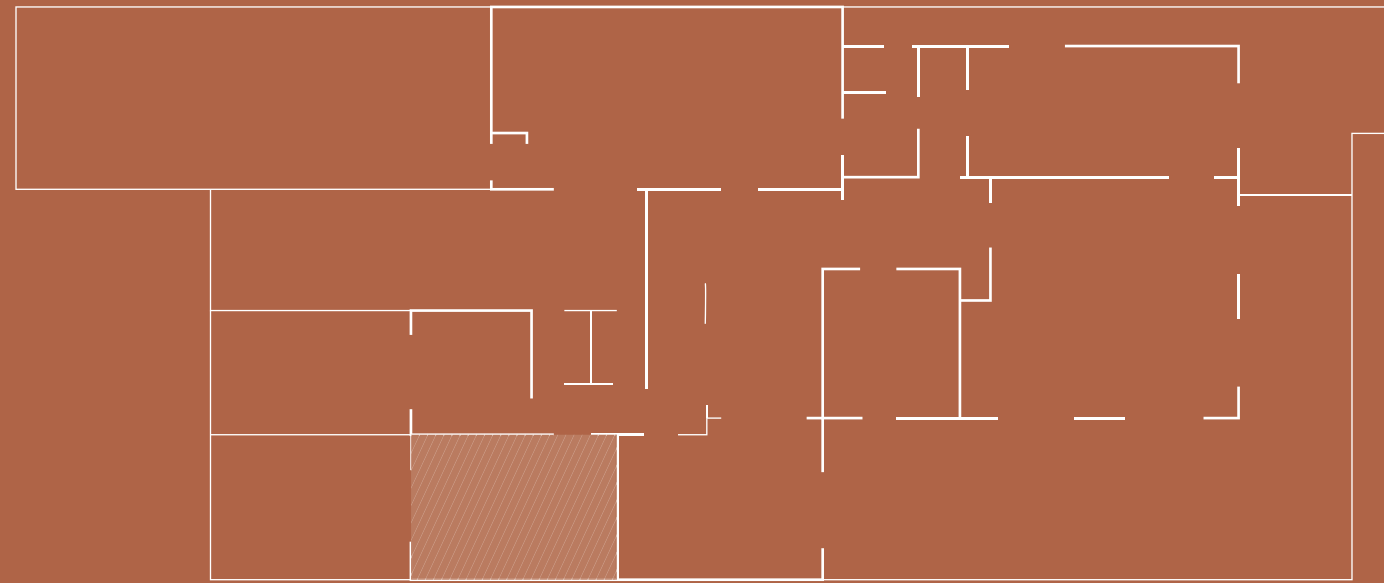
The sea (La mar in Valencian) has determined our history as a family and as a gastronomic establishment, hence the name of the room.





Terraza 'La mar'





Playa Malva-rosa

Mar Mediterráneo

# L'horta

(mín.8–máx.12)

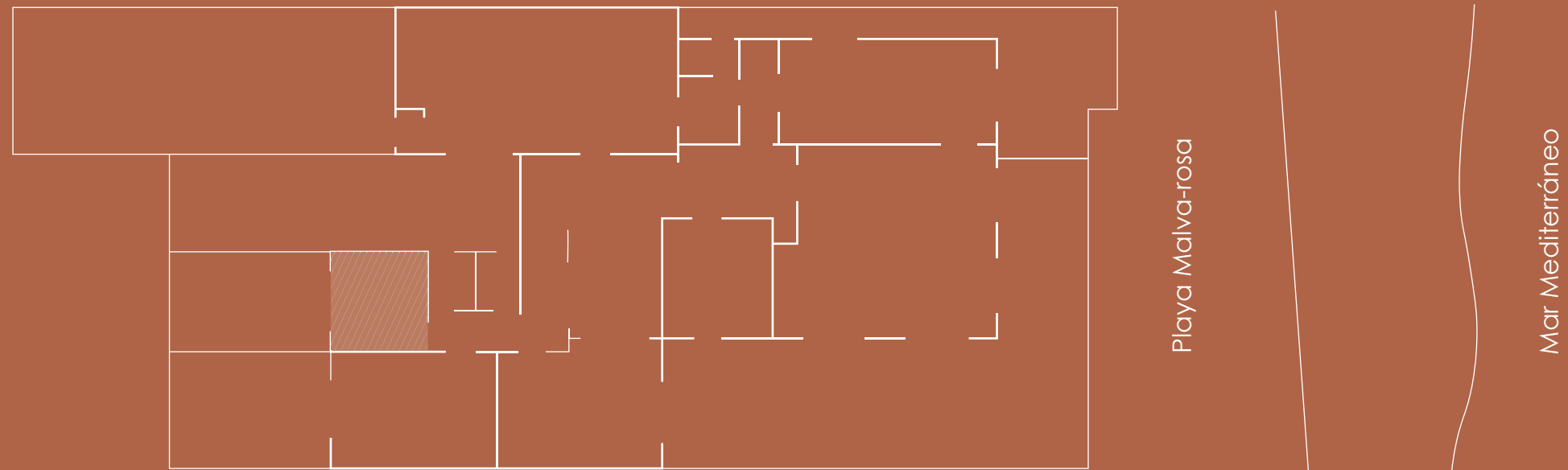
Oriented to the city, it has a minimum capacity of 8 people and a maximum of 12. The exclusivity of the room (and the terrace) until closing is 150 euros.

L'horta de Valencia composes our dishes and is the essence of our Valencian paella.



Terraza 'L'horta'





# El xamelo

(mín.4-máx. 6)

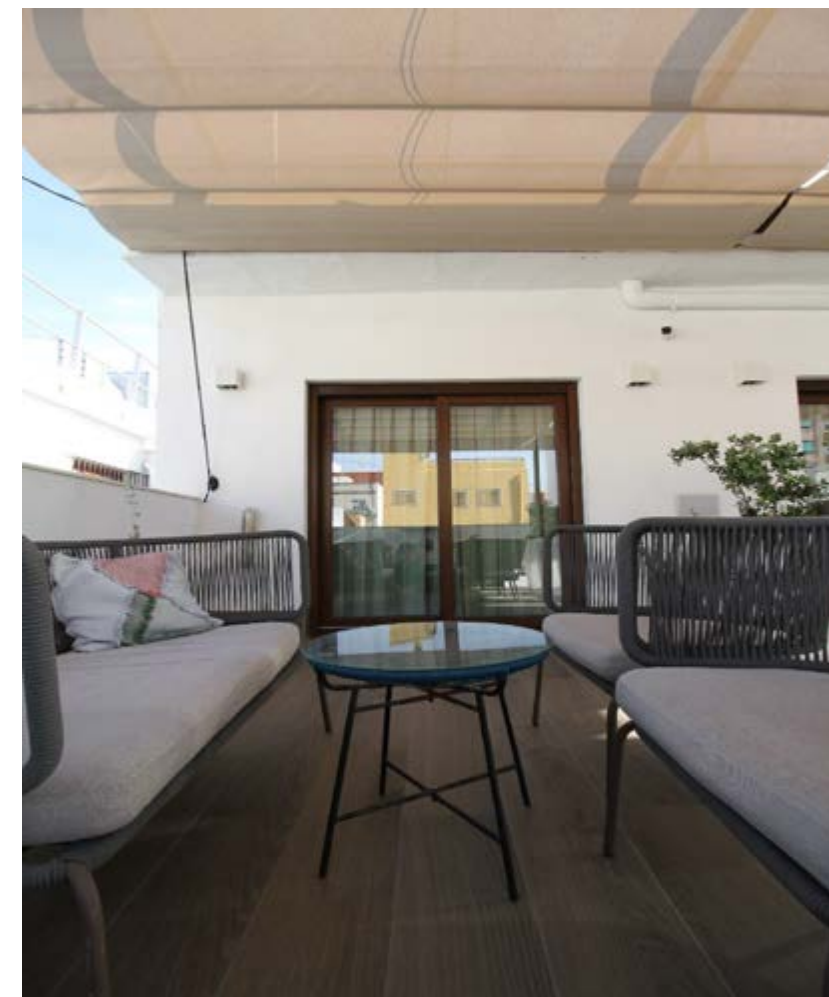
Oriented to the city, it has a minimum capacity of 4 people and a maximum of 6. The exclusivity of the room (and the terrace) until closing is 75 euros.

The xamelo (in Valencian) or dominó (in Spanish), is the board game most deeply rooted in our memory. The sound of its chips has echoed for decades and generations at home.

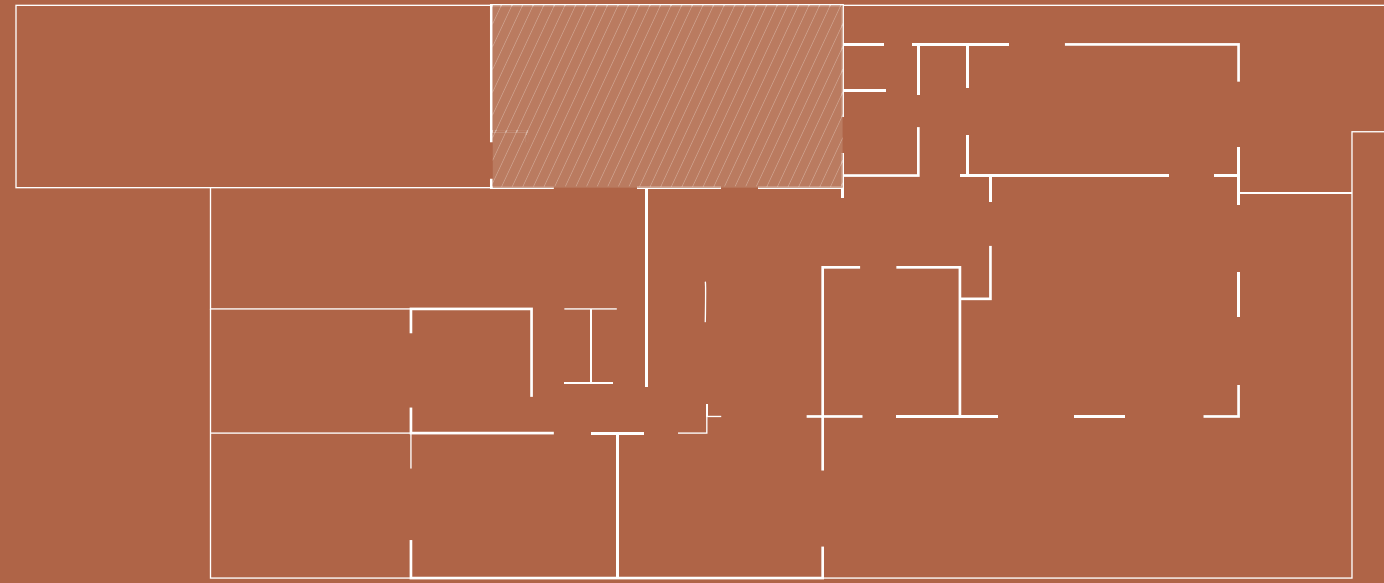




Terraza 'El xamelo'







Playa Malva-rosa

Mar Mediterráneo

# La rialla

(mín. 14-máx. 20)

Facing the city and the sea, it has a minimum capacity of 4 people and a maximum of 6. The exclusivity of the room (and the terrace) until closing is 150 euros.

We have converted the private kitchen where grandmother Lola, La rialla, cooked for the family for years.



La rialla





Terraza 'La rialla'



# La saleta

## Planta baja (mín.8-10máx)

Located on the first floor, in front of the paellero, it has a minimum capacity of 8 people and a maximum of 10. The exclusivity of the room (and the terrace) until closing is 100 euros.

La saleta was the common room where the private life of the family took place during the hours when the restaurant was open.



restaurant  
**casa carmela** | **100 ANYS**

**[reservas@casa-carmela.com](mailto:reservas@casa-carmela.com)**

Carrer d'Isabel de Villena, 155 - 46011 València.  
(+34) 963 710 073 - (+34) 696 017 989